



RoHS-Compliant Product

TO-900-S3-LF



SMD TCXO according to Telcordia GR-1244 and GR-253-Core Stratum 3, ANSI Clock T1.101, ITU-T G.812 Type IV and G.813 Option 1

1. Specification		
Type:	TO-950-S3	TO-930-S3
Power supply voltage V_S :	+5.0 V \pm 5 %	+3.3 V \pm 5 %
Frequency range:	10.0 MHz... 26.0 MHz	
Frequency tolerance at +25 °C:	$\leq \pm 1.0$ ppm	
Frequency stability options: ± 0.28 ppm ± 0.5 ppm ± 1.0 ppm	TO-950-2-S3 TO-950-5-S3- TO-951-0-S3	TO-930-2-S3 TO-930-5-S3 TO-931-0-S3
Temperature range options: -10 °C to +60 °C: -20 °C to +70 °C: -40 °C to +85 °C:	R S E	
Frequency stability vs. supply voltage changes $V_S \pm 5$ %: vs. load changes ± 10 %:	$\leq \pm 0.04$ ppm $\leq \pm 0.02$ ppm	
Holdover stability (TO-950-2 & TO-930-2) (incl. freq. stab. vs. temp. & supply voltage changes & 24 hours aging):	$\leq \pm 0.34$ ppm	
Aging @ +25 °C: per day: 1st year: after 15 years:	$\leq \pm 0.02$ ppm $\leq \pm 1.0$ ppm $\leq \pm 2.5$ ppm	
Total stability over all causes incl. 15 years aging:	$< \pm 4.6$ ppm	
Frequency control options fixed frequency: frequency tuning range $\geq \pm 5$ ppm: (by external control voltage)	X F	
Frequency control voltage V_C :	+0.5 V to +4.5 V	+0.3 V to +3.0 V
Transfer function / Linearity:	positive / 10 %	
Current consumption:	≤ 15 mA < 20.0 MHz ≤ 30 mA ≥ 20.0 MHz	≤ 15 mA < 20.0 MHz ≤ 20 mA ≥ 20.0 MHz

4	Current consumption TO-930-S3	29.07.10	Zupan	KVG Quartz Crystal Technology GmbH P.O. Box 61 D-74924 Neckarbischofsheim Tel. +49 (0) 7263 / 648-0 Fax. +49 (0) 7263 / 6196
3	Case Option BF157-5.5H added	02.07.10	Zupan	
2	TO-9x1-0-S3 added	17.12.07	Rudolph	
1		23.08.07	Rudolph	
ED	Description	Date	Name	



RoHS-Compliant Product

TO-900-S3-LF



Output signal: voltage swing: load: duty cycle: rise & fall time	HCMOS $V_{OL} \leq 0.5 \text{ V} / V_{OH} \geq 4.5 \text{ V}$ 1 kOhm // 15 pF 40 % / 60 % $\leq 8 \text{ ns}$	LVHCMOS $V_{OL} \leq 0.33 \text{ V} / V_{OH} \geq 2.97 \text{ V}$ 1 kOhm // 15 pF 40 % / 60 % $\leq 8 \text{ ns}$
Output E/D (Tri-State) function Control input Pin 2 Logic HIGH or N.C: Control input Pin 2 Logic LOW:	Output Enable Output Disable	
Phase Noise at ?F: 10 Hz : 100 Hz: 1 kHz: 10 kHz:	(typical at 10 MHz) -90 dBc -125 dBc -140 dBc -145 dBc	

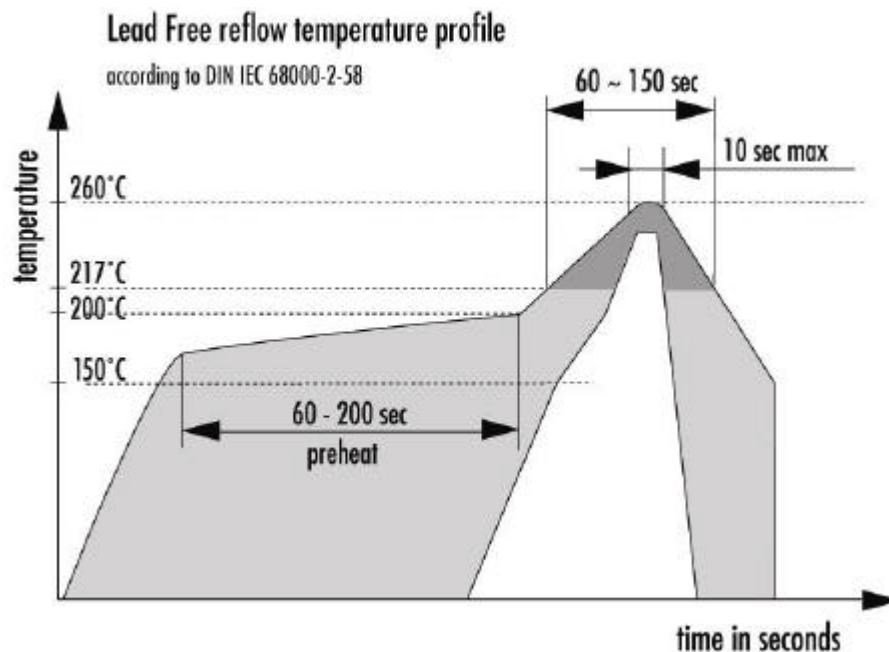
2. Environmental conditions

According to KVG Product Qualification Procedure AA-QM-200

3. Marking

Manufacturer's name, date code (week/year); Specification; Center frequency

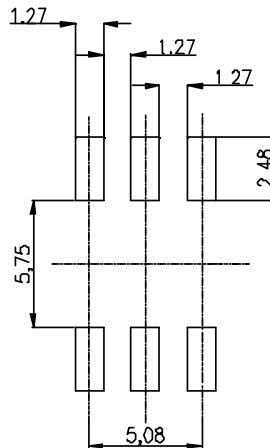
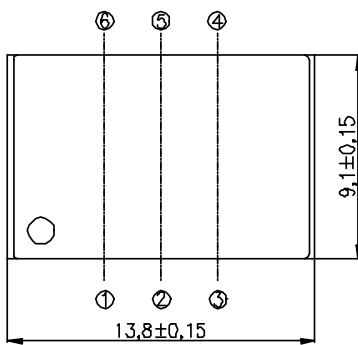
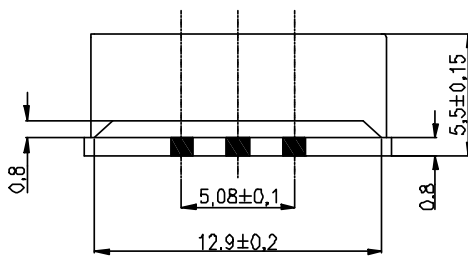
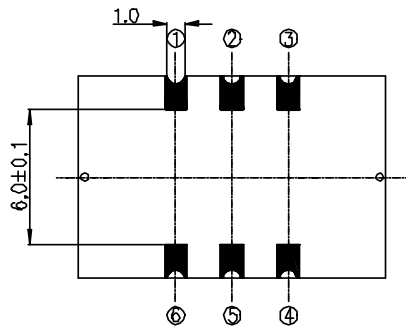
4. Reflow Soldering Profile



4	Current consumption TO-930-S3	29.07.10	Zupan	KVG Quartz Crystal Technology GmbH P.O. Box 61 D-74924 Neckarbischofsheim Tel. +49 (0) 7263 / 648-0 Fax. +49 (0) 7263 / 6196
3	Case Option BF157-5.5H added	02.07.10	Zupan	
2	TO-9x1-0-S3 added	17.12.07	Rudolph	
1		23.08.07	Rudolph	
ED	Description	Date	Name	

5. Available Case Options

Option a) Case Style: BF 157-5.5D

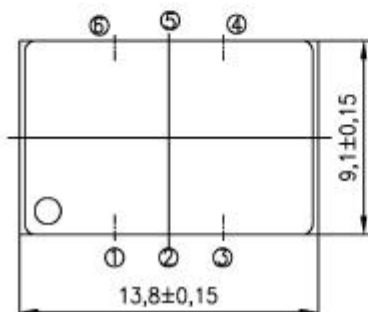
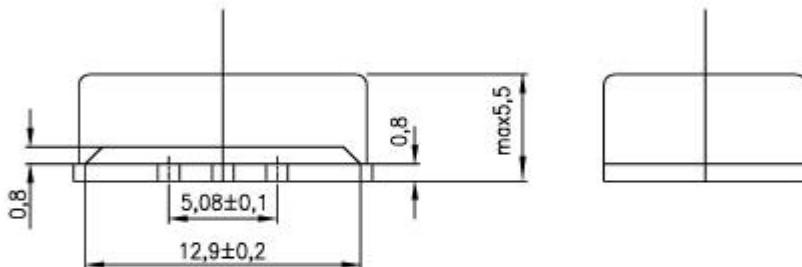
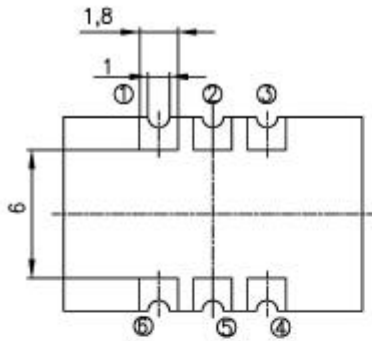


1. Pin configuration

1. CV-in (V_C) or N.C.
2. Output E/D Control Input
3. GND, Case
4. RF Output
5. N.C.
6. Supply Voltage V_S

4	Current consumption TO-930-S3	29.07.10	Zupan	KVG Quartz Crystal Technology GmbH P.O. Box 61 D-74924 Neckarbischofsheim Tel. +49 (0) 7263 / 648-0 Fax. +49 (0) 7263 / 6196
3	Case Option BF157-5.5H added	02.07.10	Zupan	
2	TO-9x1-0-S3 added	17.12.07	Rudolph	
1		23.08.07	Rudolph	
ED	Description	Date	Name	

Option b) Case Style: BF 157-5.5H



1.Pin configuration

1. CV-in (V_C) or N.C.
2. Output E/D Control Input
3. GND, Case
4. RF Output
5. N.C.
6. Supply Voltage V_S

4	Current consumption TO-930-S3	29.07.10	Zupan	KVG Quartz Crystal Technology GmbH P.O. Box 61 D-74924 Neckarbischofsheim Tel. +49 (0) 7263 / 648-0 Fax. +49 (0) 7263 / 6196
3	Case Option BF157-5.5H added	02.07.10	Zupan	
2	TO-9x1-0-S3 added	17.12.07	Rudolph	
1		23.08.07	Rudolph	
ED	Description	Date	Name	