



ROHS-Compliant Product

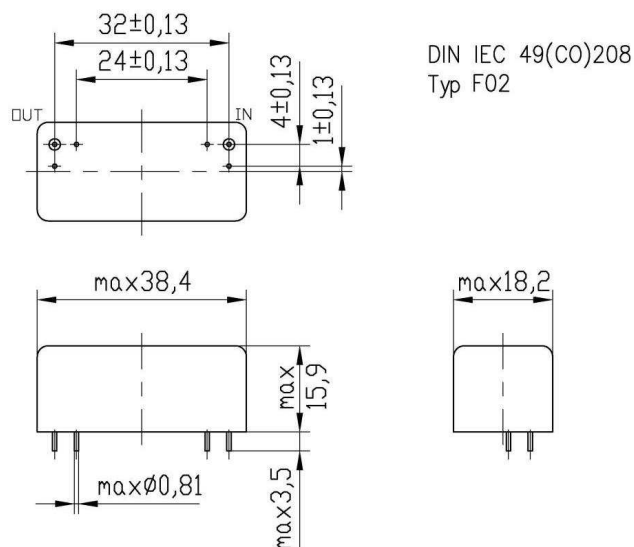
Monolith-Linearphase filter



Examples of our product range

Type	Frequency	Case Style	Passband		Stopband		Termination in/out	POLE	Insertion loss max.
	MHz		dB	± kHz	dB	± kHz	(Ω)		dB
XFM-9S10-LF	8,99785	BF15	6	1,85	26	2,15	500 // 27 pF	8	6
XFM-107S133-LF	10,70	BF10-15.9	3	1,35	60	12,15	50	4	3
XFM-107S139-LF	10,70	BF15	6	1,875	80	4,5	50	8	4
XFM-107S52-LF	10,70	BF14	3	3	50	25	3900	4	2
XFM-107S132-LF	10,70	BF10-15.9	3	4,5	60	40	50	4	2
XFM-107S72-LF	10,70	BF15	3	6,7	30	9	5000 // 1 pF	10	3
XFM-107S142-LF	10,703	BF15	6	1,875	80	4,5	50	8	4
XFM-214S152-LF	21,40	BF15	6	3	60	5,333	1000 // 5 pF	10	5
XFM-214S143-LF	21,40	BF10-15.9	2	5	60	12,5	50	6	6
XFM-214S45-LF	21,40	BF25	3	7	40	40	2400	4	2
XFM-214S73-LF	21,40	BF19	6	7,5	75	16	1500 // 2 pF	8	3

Case Style BF10-15.9



KVG Quartz Crystal Technology GMBH

D-74922 Neckarbischofsheim P.O.B. 61 74924 Neckarbischofsheim Waibstadter Strasse 2 - 4
 Tel: +49 (0) 7263 / 648 - 0 Fax: +49 (0) 7263 / 6196 e-mail: info@kvg-gmbh.de

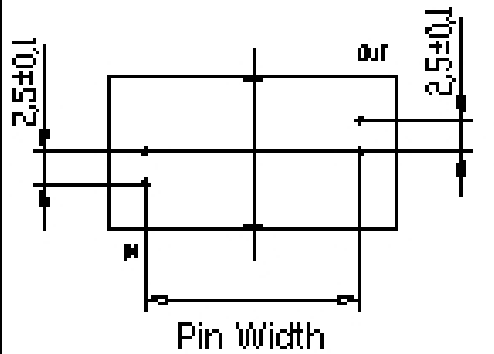


ROHS-Compliant Product

Monolith-Linearphase filter



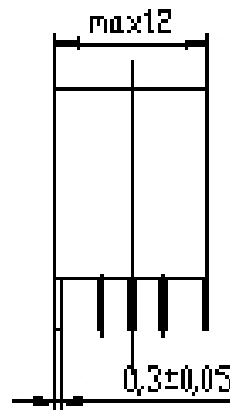
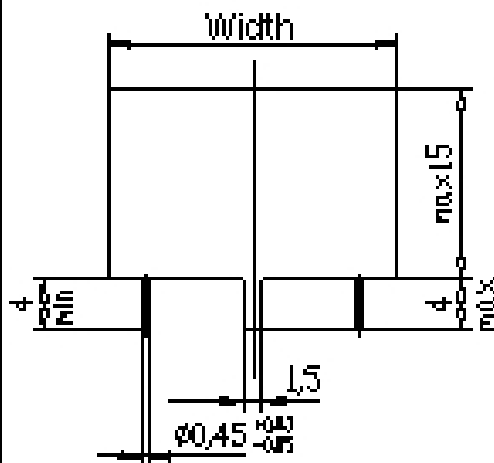
Case Style BF14 / BF15



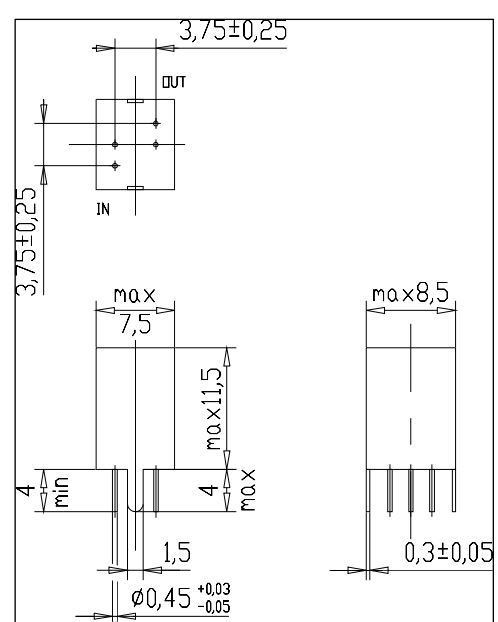
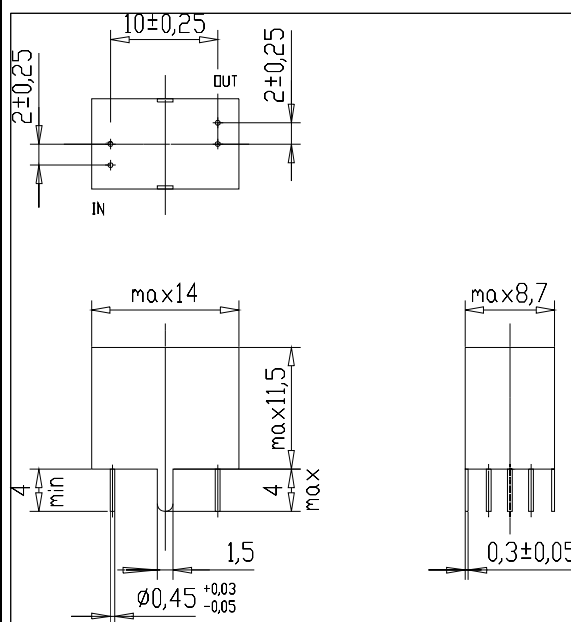
DIN IEC 49(CO)20E
Typ F06

Dimensions

	Width max.	Pin- Width ± 0.25
BF14	18.5	13.4
BF15	23.0	17.8



Case Style BF19 / BF25



KVG Quartz Crystal Technology GMBH

D-74922 Neckarbischofsheim P.O.B. 61 74924 Neckarbischofsheim Waibstadter Strasse 2 - 4
Tel: +49 (0) 7263 / 648 - 0 Fax: +49 (0) 7263 / 6196 e-mail: info@kvg-gmbh.de